

HB 2017 Transit Advisory Committee

July 26, 2024

Webex

Chat

- Right side window
- Chats are recorded

Participants

- Right side window
- Raise your hand

Video On/Off

Reactions

Leave Meeting

Mute/Unmute



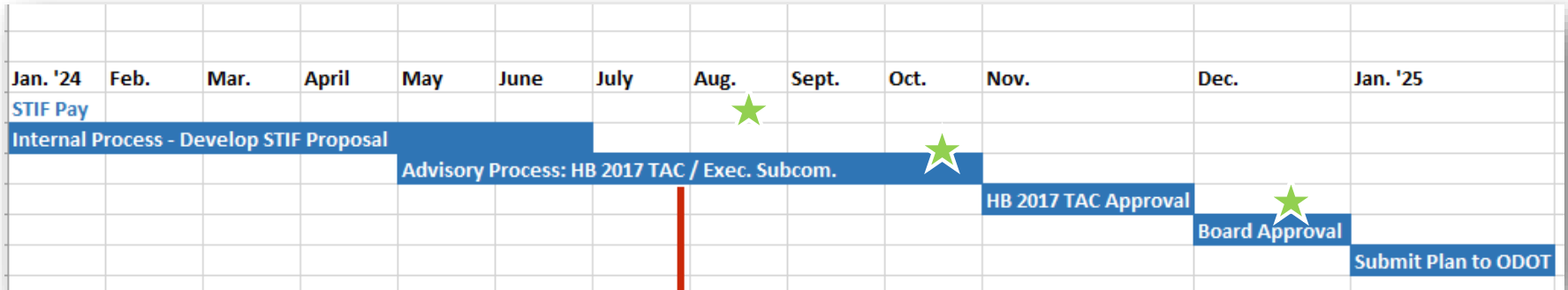
Meeting Agenda

Public comment	10:00 a.m.
Timeline Check-in	10:05 a.m.
FY26-27 STIF Plan Budget Outline	10:10 a.m.
Regional Coordination	10:50 am.
Vote: Add Member to the ATFAC	11:20 a.m.
Meeting Adjourns	11:30 a.m.

Public Comment



Timeline for STIF Plan Process



We are here

★ TriMet Board of Directors Review

FY26-27 STIF Plan Budget Outline

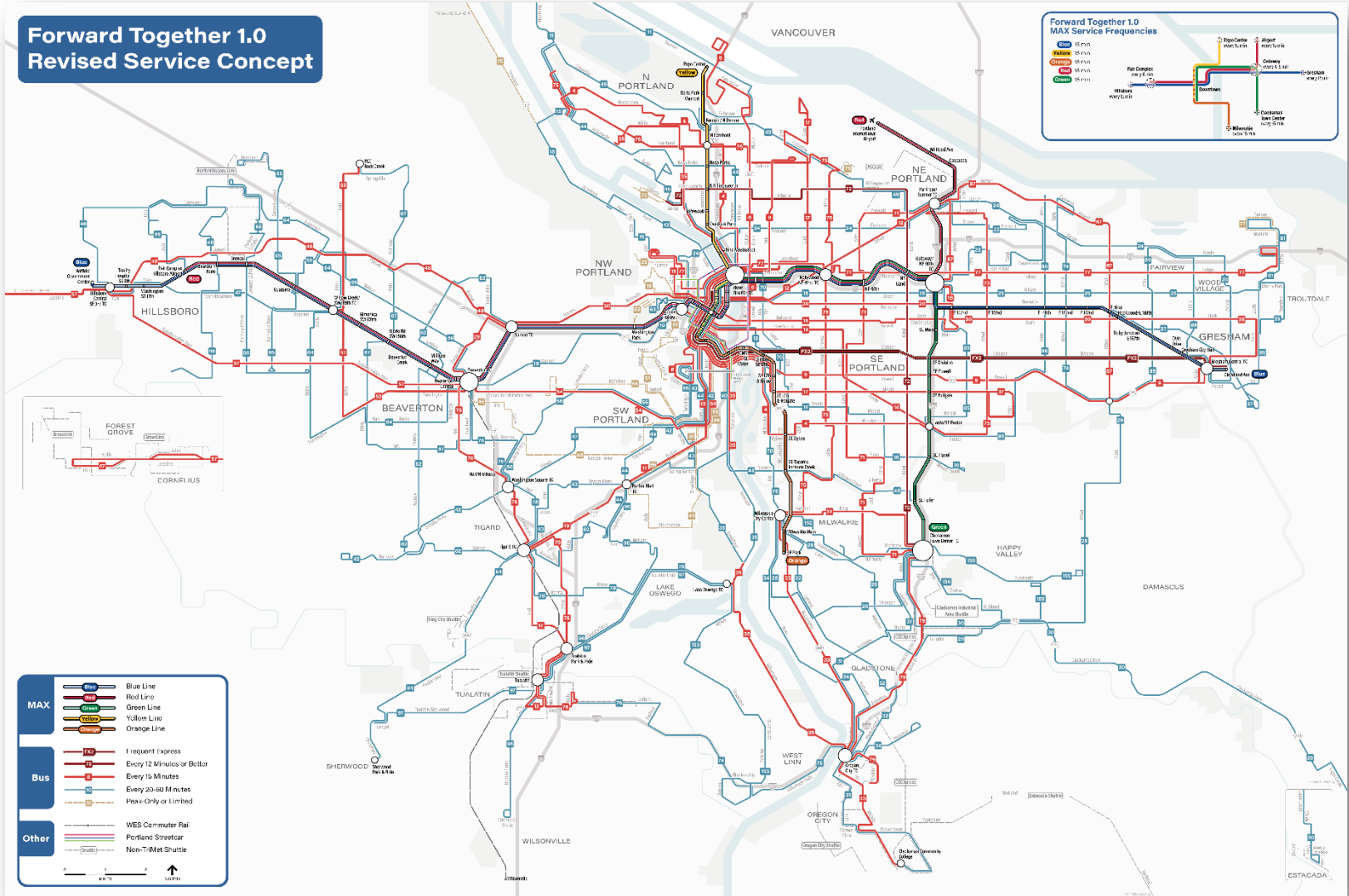
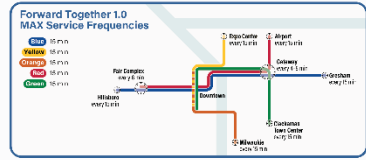
FY26-27 STIF Programs

TriMet FY26-27 STIF Plan Budget Outline

- Service expansion & preservation
- Vehicles – LIFT
- Low-Income Fare Program/Student Fare Program
- STIF Human Services Program
- Regional Coordination Program

Service Expansion

Forward Together 1.0 Revised Service Concept



MAX		Blue Line
		Red Line
		Green Line
		Yellow Line
		Orange Line
Bus		Frequent Express
		Every 12 Minutes or Better
		Every 15 Minutes
		Every 20-60 Minutes
		Peak-Only or Limited
Other		WES Commuter Rail
		Portland Streetcar
		Non-TriMet Shuttle

Scale: 0 1 2 Miles

North Arrow

Service Expansion

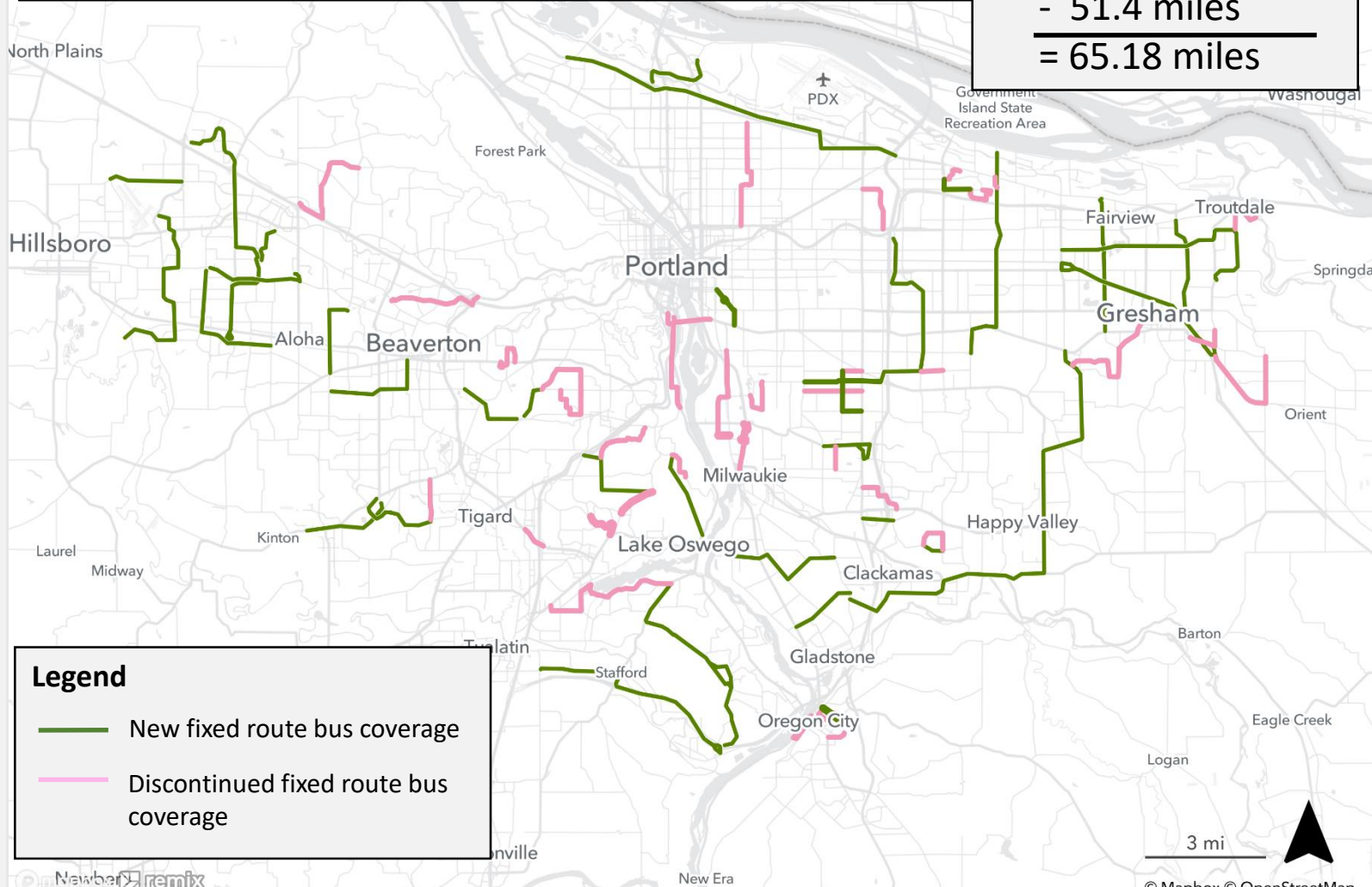
Forward Together: Service Additions/ Discontinuations

New Coverage


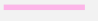
+ 116.58 miles

- 51.4 miles

= 65.18 miles



Legend

-  New fixed route bus coverage
-  Discontinued fixed route bus coverage

Service Expansion

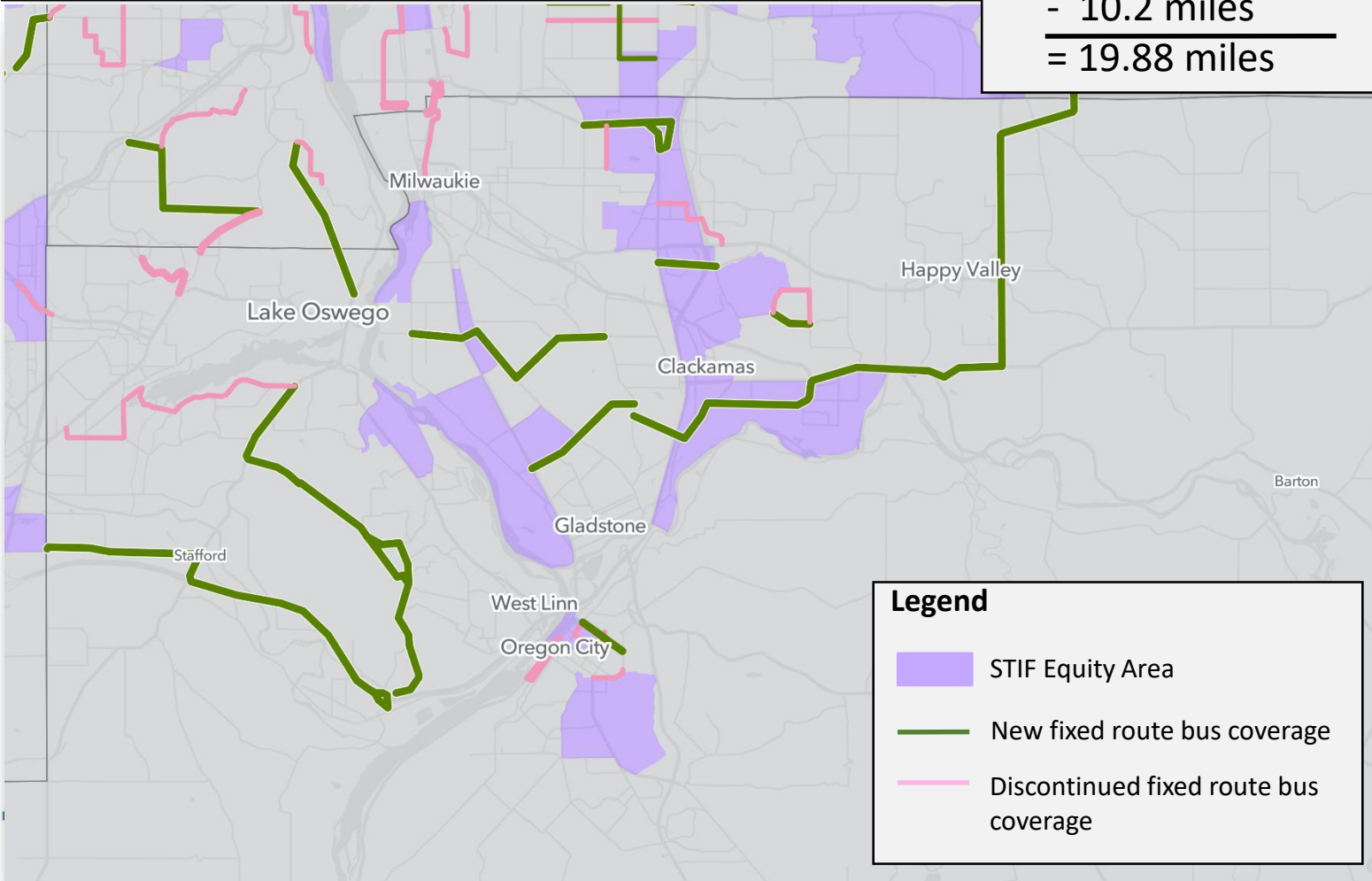
Forward Together: Service Additions/ Discontinuations – Clackamas

New Coverage

+ 30.8 miles

- 10.2 miles

= 19.88 miles



Legend

- STIF Equity Area
- New fixed route bus coverage
- Discontinued fixed route bus coverage

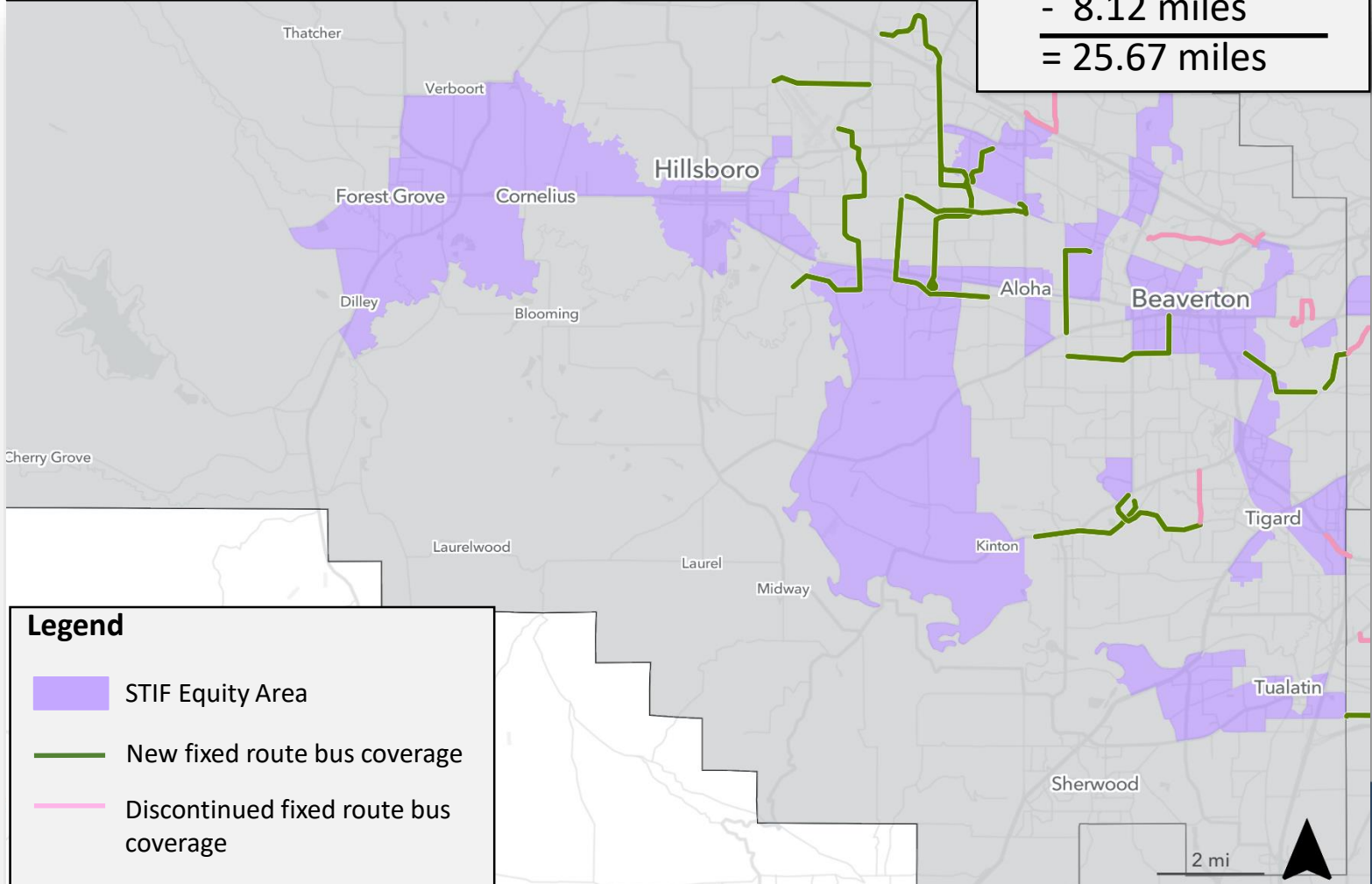
Service Expansion

Forward Together: Service Additions/ Discontinuations – Washington

New Coverage

+ 33.79 miles
- 8.12 miles

= 25.67 miles



Legend

- STIF Equity Area
- New fixed route bus coverage
- Discontinued fixed route bus coverage

Service Expansion

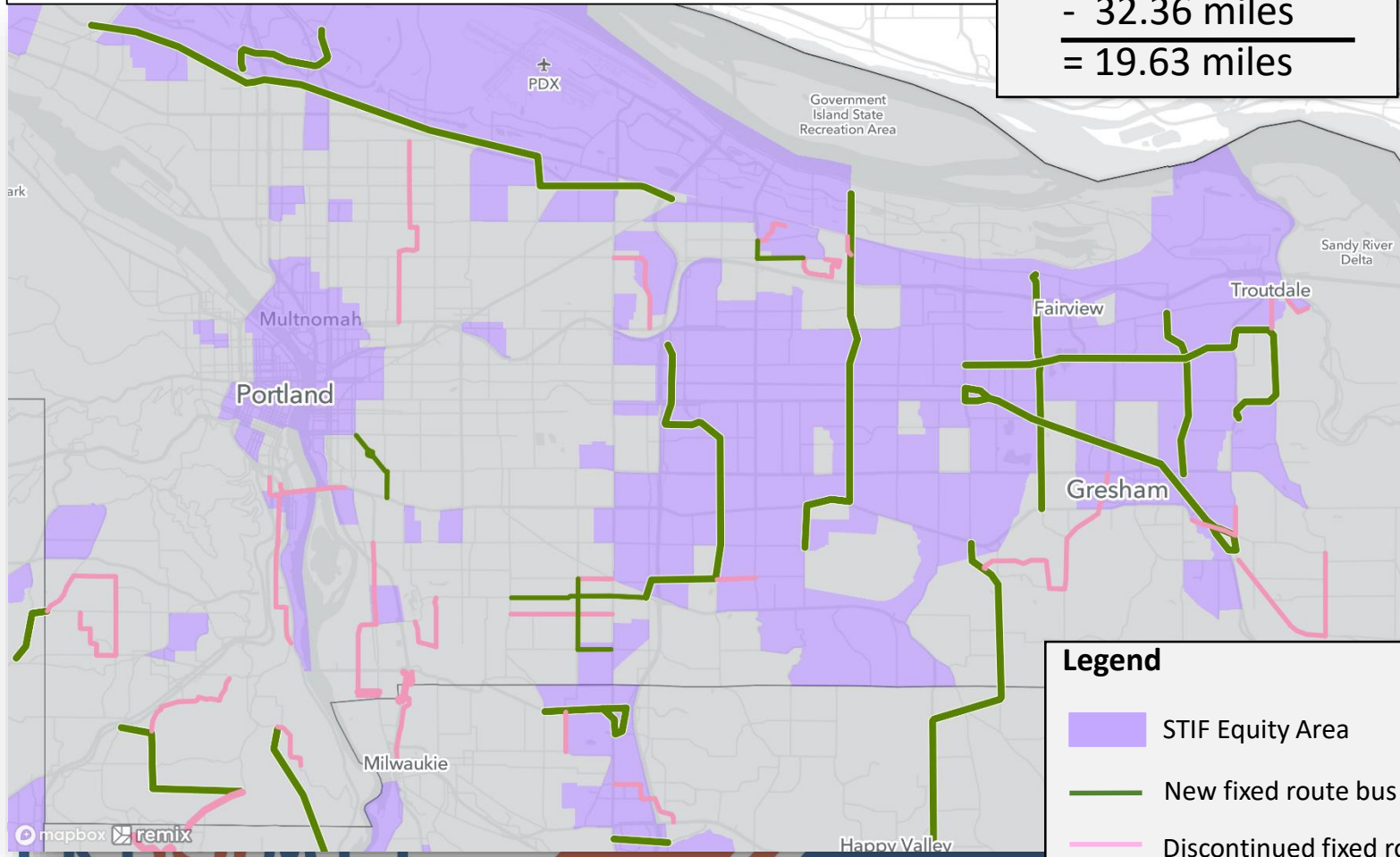
Forward Together: Service Additions/ Discontinuations – Multnomah

New Coverage


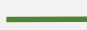

+ 51.99 miles

- 32.36 miles

= 19.63 miles



Legend

-  STIF Equity Area
-  New fixed route bus coverage
-  Discontinued fixed route bus coverage

Fare Subsidy Programs

Access Transit Programs

- Fare Relief
- Fare Assistance

High School Programs

- High School Grant Program
- Youth Summer Pass

Income-Qualified Honored Citizen Fare

Honored Citizen Fare

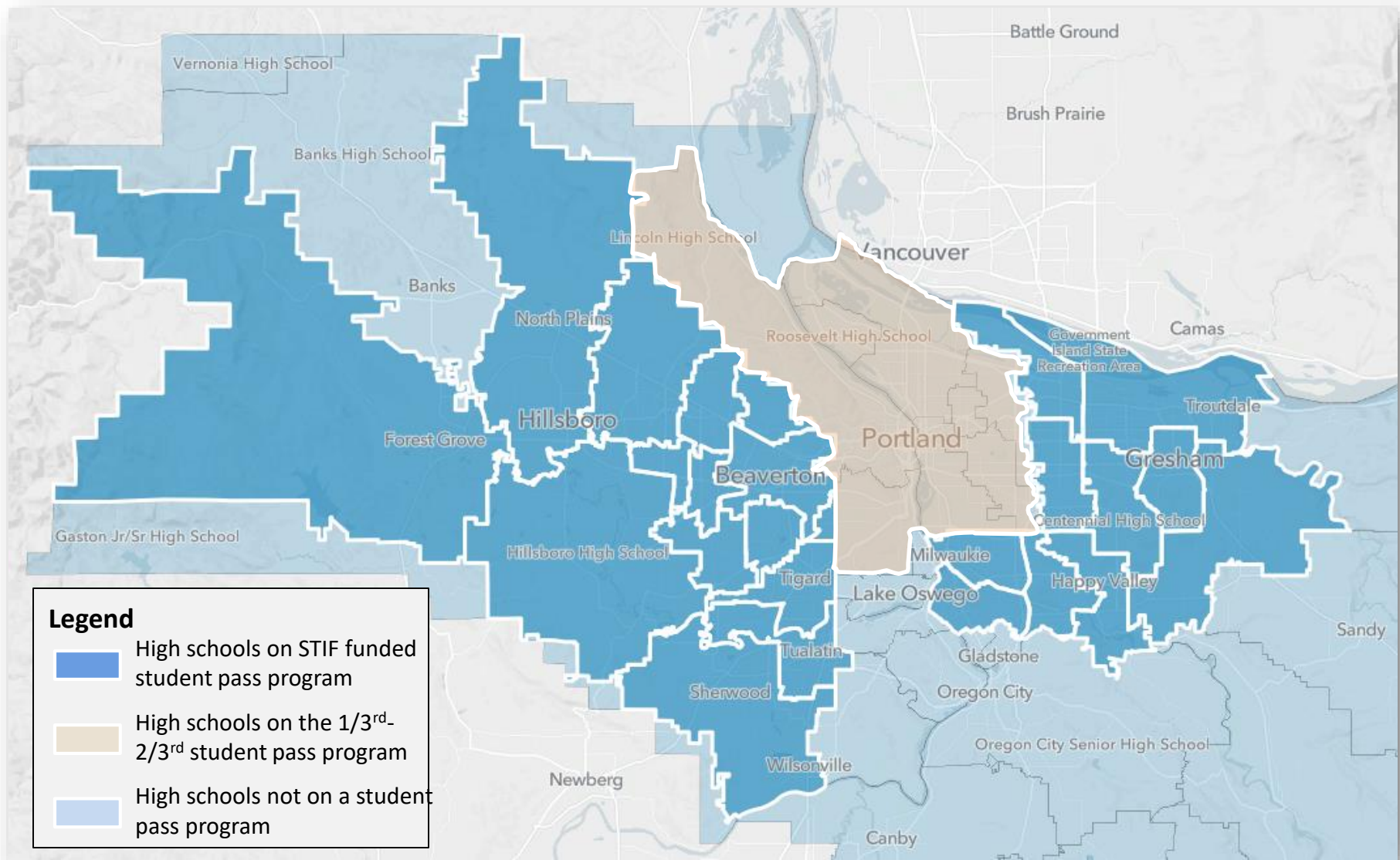
- Half the cost of Adult fare
- \$28 per-month cap with Hop
- People who qualify based on income
- Seniors age 65+
- People on Medicare
- People with disabilities,
- Veterans and active-duty military

Student Fare Programs

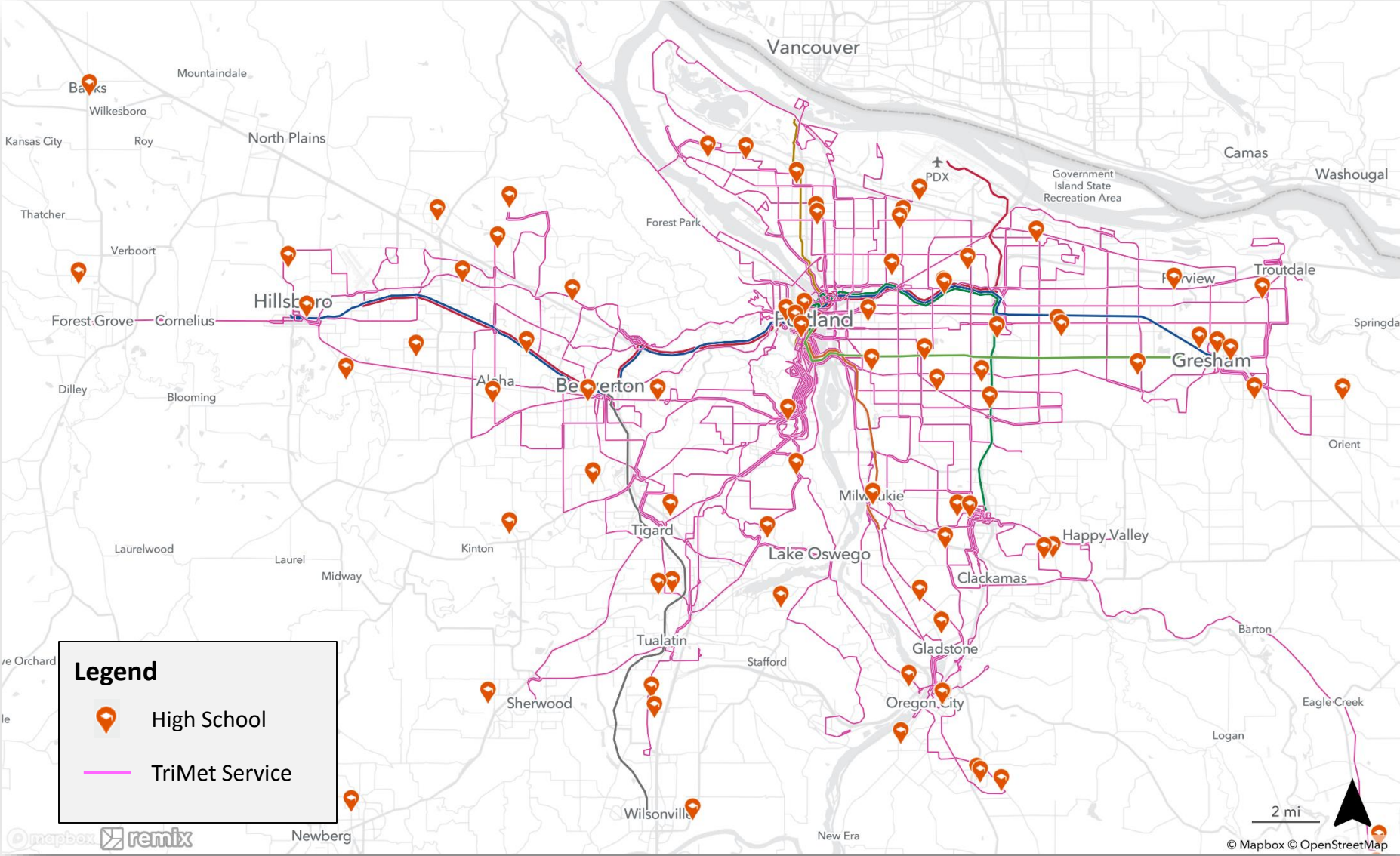
Participating School Districts

- Beaverton
- Centennial
- David Douglas
- Forest Grove
- Gresham Barlow
- Hillsboro
- Multnomah ESD
- North Clackamas
- Parkrose
- Reynolds
- Tigard/Tualatin
- Sherwood

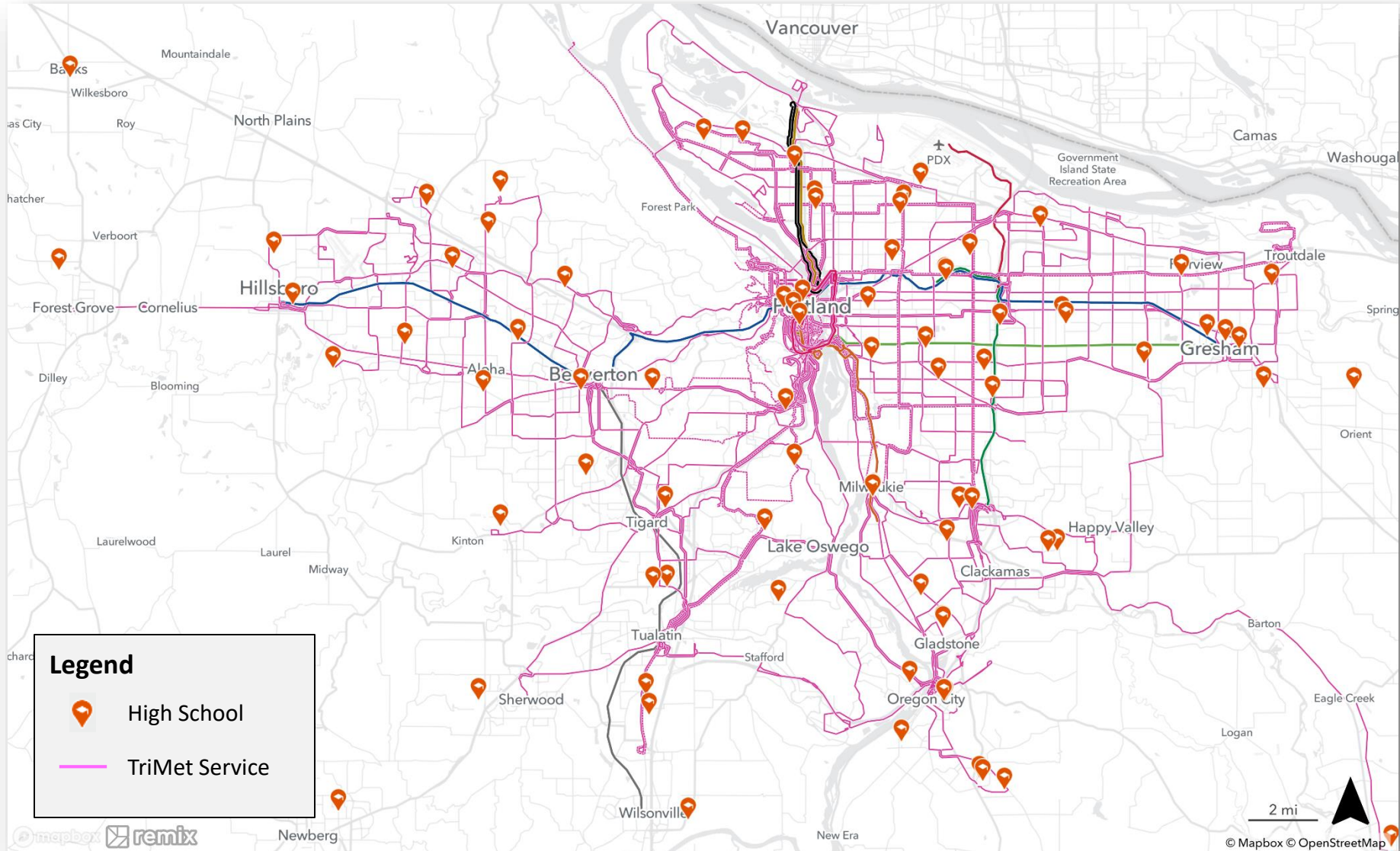
Participating High Schools



High Schools Near TriMet Service, 2024



High Schools Near TriMet Service – Forward Together



TriMet LIFT Vehicles

Leveraging other funds to replace 80 vehicles

- Federal earmark: \$400,000
- ODOT Vehicle Replacement Program
- Pursuing STIF Pop or 5310 funds
- Diesel powered vs zero emission vehicles



Human Service Program

Transportation serving:

- Older adults
- People with disabilities

Combined with the STIF
Population Formula Funds

Allocated by the ATFAC



Regional Coordination Program/ Portland Streetcar

Regional Coordination

Shuttles

- Clackamas County
- Multnomah County
- Washington County

Inter-District Service

- SMART
- Sandy Area Metro
- South Clackamas Transit District



Regional Coordination

Convert program into a percentage of STIF funds

- Convert to a percentage to be applied to future STIF allocations
- In the future, allocations go up or down with the STIF revenue projections
- All programs are either first/last mile programs or inter-district services
- Allows for predictability for the programs

Portland Streetcar

Continue funding the program at current levels

- \$3,050,000 – FY26
- \$3,050,000 – FY27



Add Member to ATFAC

ATFAC

Multnomah County

- Robyn Johnson has left the committee
- Raquel Barajas, Division Planner, Aging, Disability, & Veterans Services

Committee Vote on ATFAC Membership

Voting process for the committee

- Committee Chair calls for a motion
- Member makes a motion
- Member seconds the motion
- Committee Chair calls for discussion
- A member can ask to amend the motion
- If the member who made the motion accepts, then
 - the Committee Chair seeks a second
 - if seconded, the Committee Chair calls for discussion
- If the member denies the amendment, then the motion goes to a vote after discussion
- Committee Chair calls for a vote on the motion; committee votes

Meeting Adjourned